



A.N.D. Technologies, Inc.  
4104 24th Street # 627  
San Francisco, CA 94114 USA  
Phone: 415-701-9222  
Fax: 415-651-9000

## Pcounter “Campus Card” Solutions

### What does “Campus Card” Solutions mean?

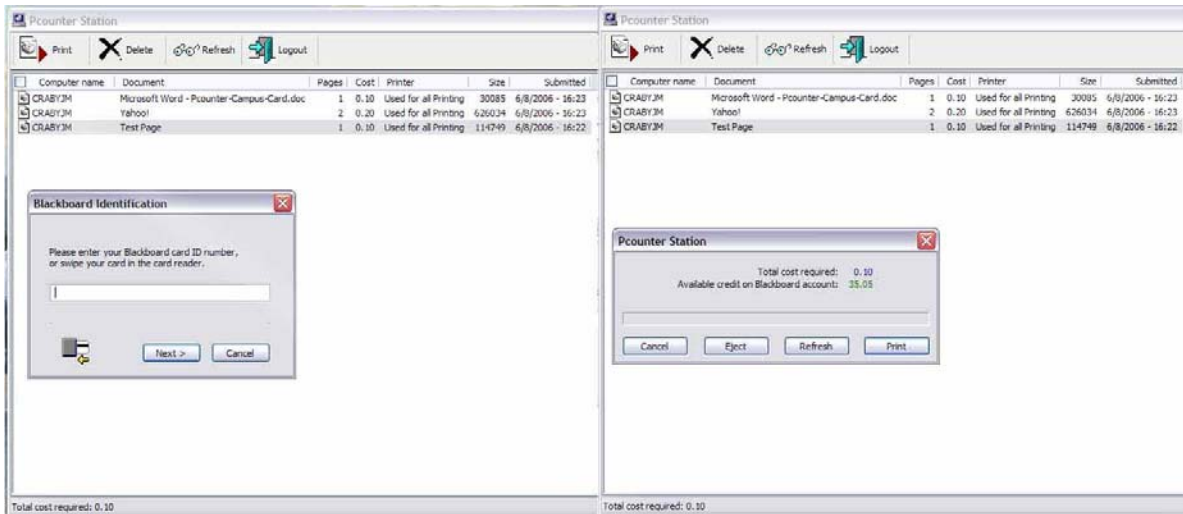
When we refer to a “Campus Card” solution, we are referring to a Blackboard, CBORD Odyssey or CardSmith campus accounting system. Many campuses already use a Blackboard, CBORD or CardSmith accounting systems to track items such as student meals, books, and even vending machines. A.N.D. Technologies has developed a “Campus Card” Integration solution for Pcounter that will allow students to charge printing to their Blackboard, CBORD or CardSmith account.

### How does it work?

Pcounter server runs on a Windows or Netware File/print server. The students print to printer shares hosted on the server. The job prices are calculated and then paused for print release. At the release station the student completes the transaction to their “Campus Card” account. There are two different types of transaction models to choose from, **Physical Release Station** and **Virtual Release Station**.

### Physical Release Station

The Physical Release Station is a classic way of releasing print jobs and charging them to a “Campus Card” system. After printing from a workstation the job is paused until the student selects the job for print release and then swipes their “Campus Card” and pays for the job. Below is an example of the Physical Release Station model.

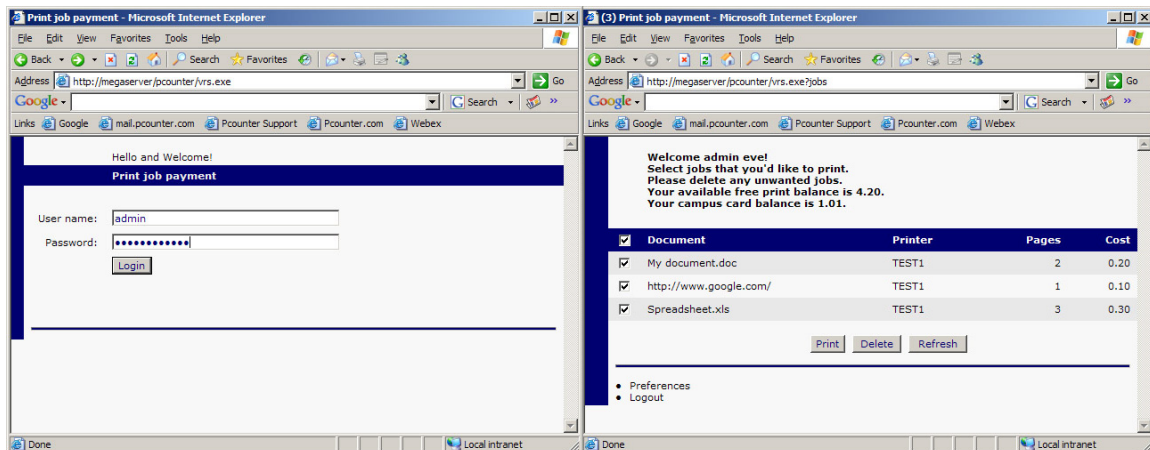


## Physical Release Station Key Features

- Anonymous work flow (Students not required to log into workstation)
- Public Access friendly
- Workflow ensures printer is free when releasing print jobs
- Support Both Windows and Netware environments

## Virtual Release Station

The Virtual Release Station is a great way to charge print jobs to a “Campus Card” system without the use of a physical release station to take up space in your labs. Windows, Macintosh, and even Linux desktop user will go to the same web site and release their print jobs. Users can print several jobs, then go to the web site and release them. After logging into the web site with their Active Directory or Novell eDirectory account, VRS automatically looks up their “Campus Card” number referenced in their AD or NDS account. Below is an example of what the user will see.



## Virtual Release Station Key Features

- No physical release stations needed
- Great for wireless, Macintosh or Linux users
- Easily tracks free print quotas and campus card balance
- Supports Both Windows and Netware environments (Windows Web server required)

## Sale Information

For information about pricing of Pcounter's Campus Card Solutions, please contact [sales@pcounter.com](mailto:sales@pcounter.com). Please include your telephone number and a sales rep will contact you by the next business day.